

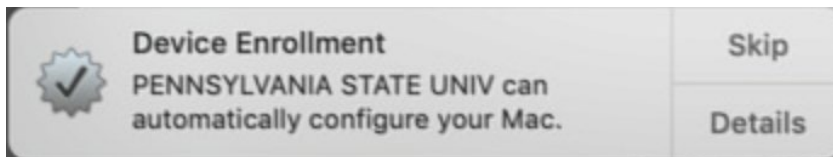
Migrate from JAMF to the Intelligent HUB

An IT Hub Guide



If you have any questions or concerns during the migration process, please contact the ITLA Help Desk via email at lahelpdesk@psu.edu or through [our website](#).

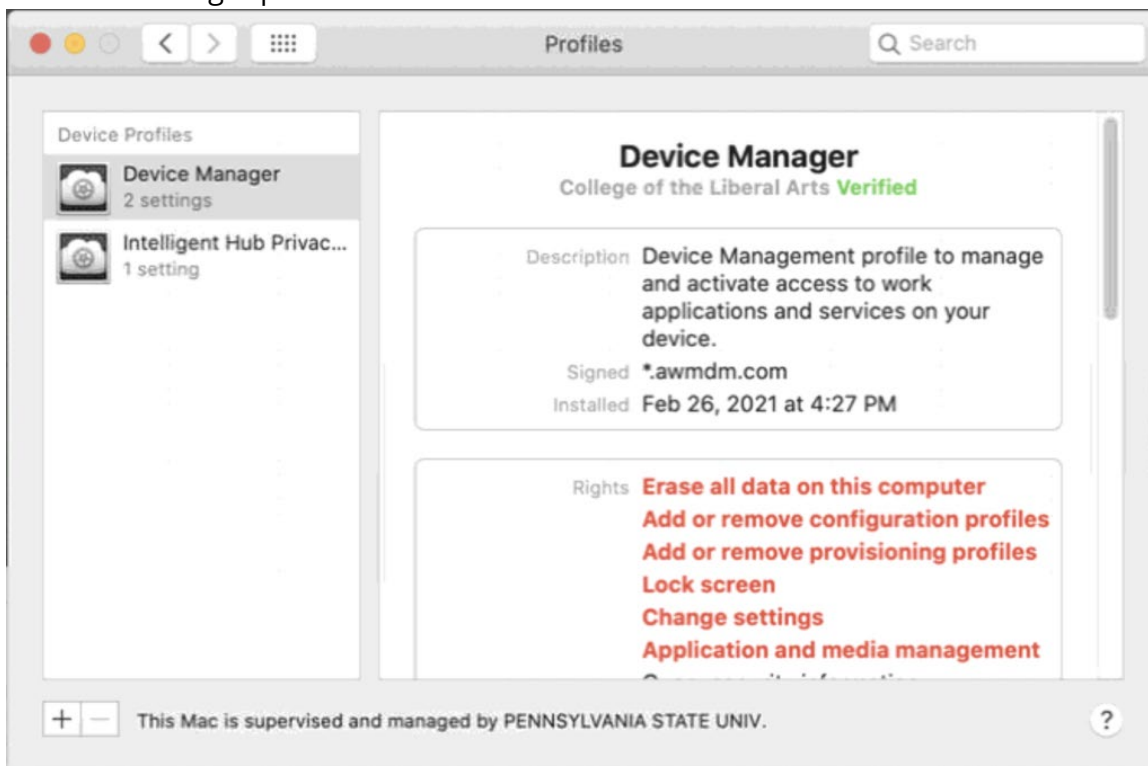
1. You will receive a "Device Enrollment" notification in the top right corner of your screen. Select "Details."



2. This will open your system preferences. A pop-up will ask if you would like to allow device enrollment. Select "Allow."

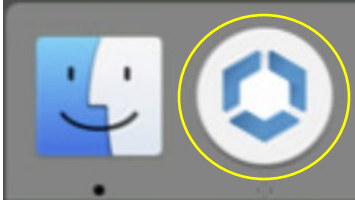


3. A Device Manager profile will load. Your screen should match the screen below.

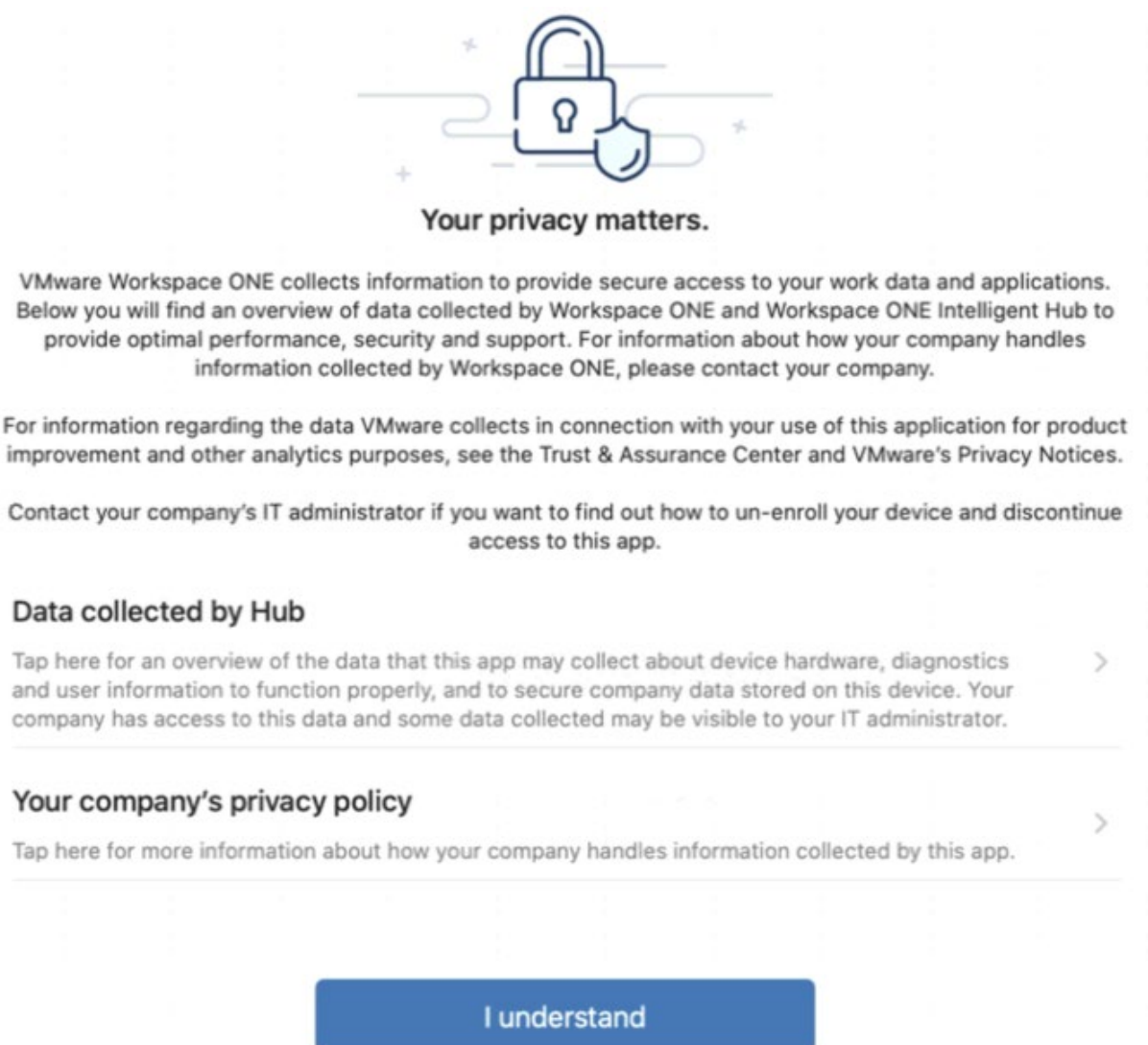




4. After a few minutes, a new icon will appear on your dock. This is the Intelligent Hub's icon. Select the Intelligent Hub.



5. A pop-up will appear with the Intelligent Hub' privacy agreement. You must select "I Understand" to continue.



The image shows a privacy agreement pop-up window. At the top, there is a blue padlock icon with a keyhole, surrounded by decorative lines and stars. Below the icon, the text reads: "Your privacy matters. VMware Workspace ONE collects information to provide secure access to your work data and applications. Below you will find an overview of data collected by Workspace ONE and Workspace ONE Intelligent Hub to provide optimal performance, security and support. For information about how your company handles information collected by Workspace ONE, please contact your company." Below this, there are three sections of text, each with a right-pointing arrow: "For information regarding the data VMware collects in connection with your use of this application for product improvement and other analytics purposes, see the Trust & Assurance Center and VMware's Privacy Notices.", "Contact your company's IT administrator if you want to find out how to un-enroll your device and discontinue access to this app.", "Data collected by Hub", "Tap here for an overview of the data that this app may collect about device hardware, diagnostics and user information to function properly, and to secure company data stored on this device. Your company has access to this data and some data collected may be visible to your IT administrator.", "Your company's privacy policy", "Tap here for more information about how your company handles information collected by this app." At the bottom of the pop-up, there is a blue button with the text "I understand".

Your privacy matters.

VMware Workspace ONE collects information to provide secure access to your work data and applications. Below you will find an overview of data collected by Workspace ONE and Workspace ONE Intelligent Hub to provide optimal performance, security and support. For information about how your company handles information collected by Workspace ONE, please contact your company.

For information regarding the data VMware collects in connection with your use of this application for product improvement and other analytics purposes, see the Trust & Assurance Center and VMware's Privacy Notices.

Contact your company's IT administrator if you want to find out how to un-enroll your device and discontinue access to this app.

Data collected by Hub

Tap here for an overview of the data that this app may collect about device hardware, diagnostics and user information to function properly, and to secure company data stored on this device. Your company has access to this data and some data collected may be visible to your IT administrator.

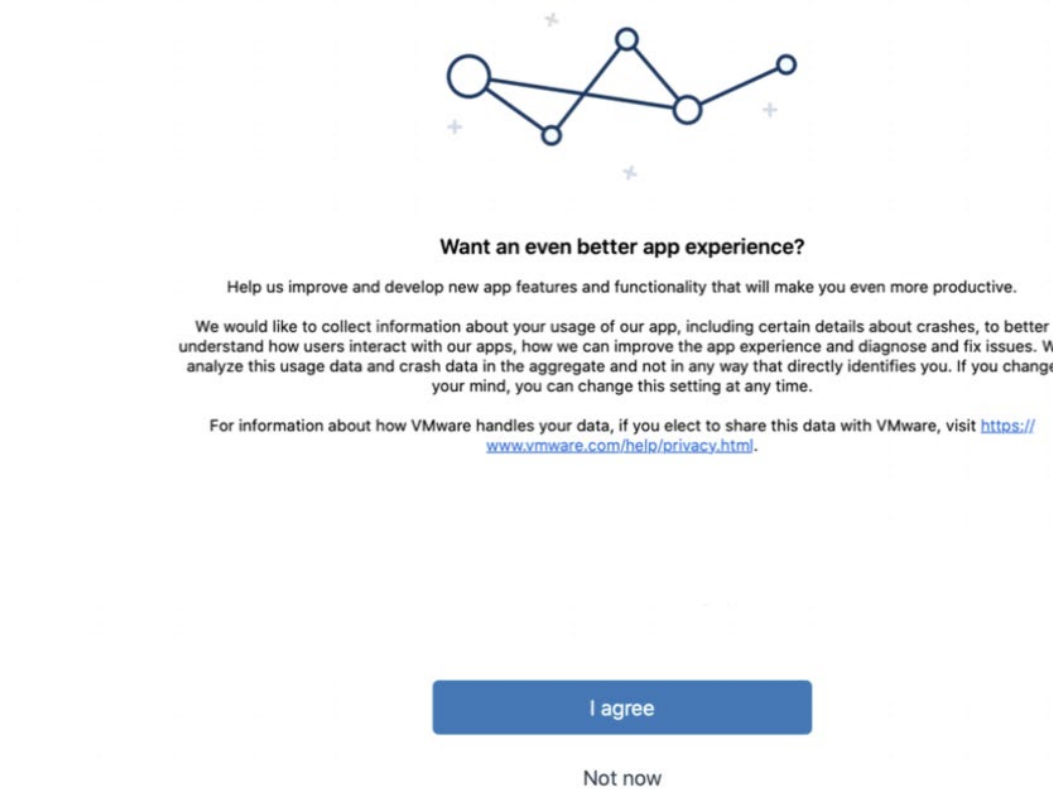
Your company's privacy policy

Tap here for more information about how your company handles information collected by this app.

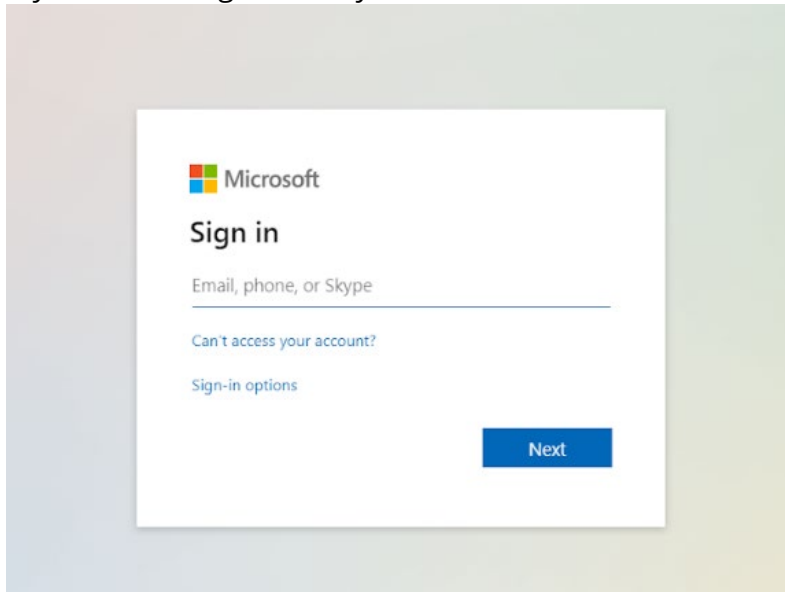
I understand



- The next screen will ask if you would like to send your data to the Intelligent Hub to create a better app experience in the future. You must select "I Agree" or "Not Now" to continue.

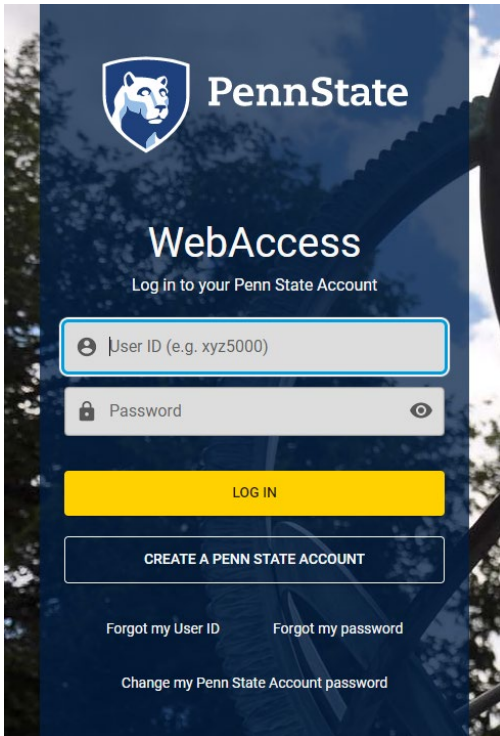


- If you are not signed into your Penn State Microsoft account, you will be asked to do so.

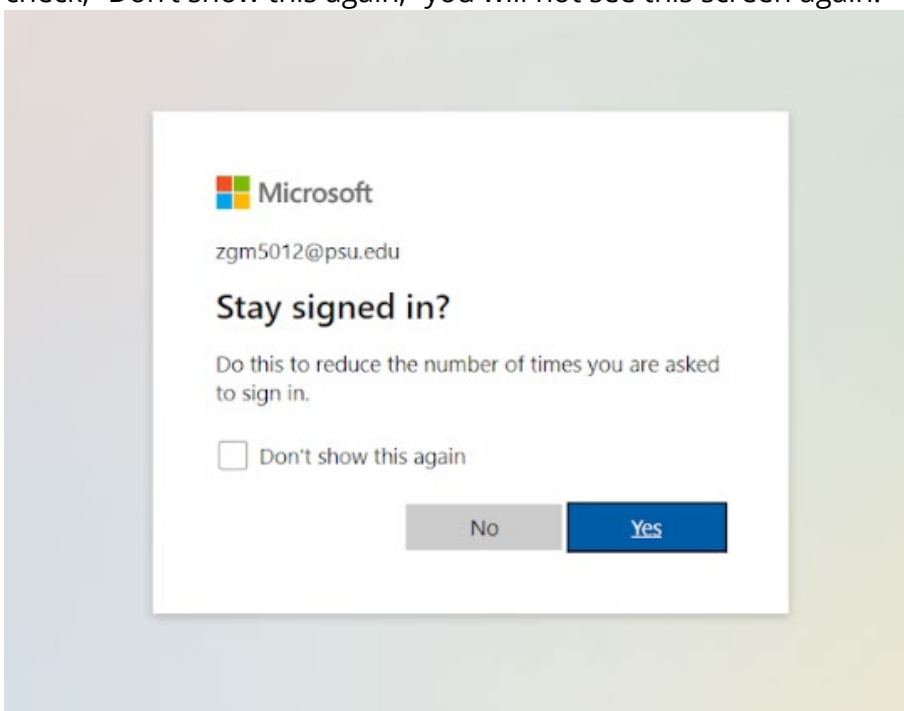




8. If you are not currently logged into WebAccess, you will be asked to do so and authenticate with DUO.

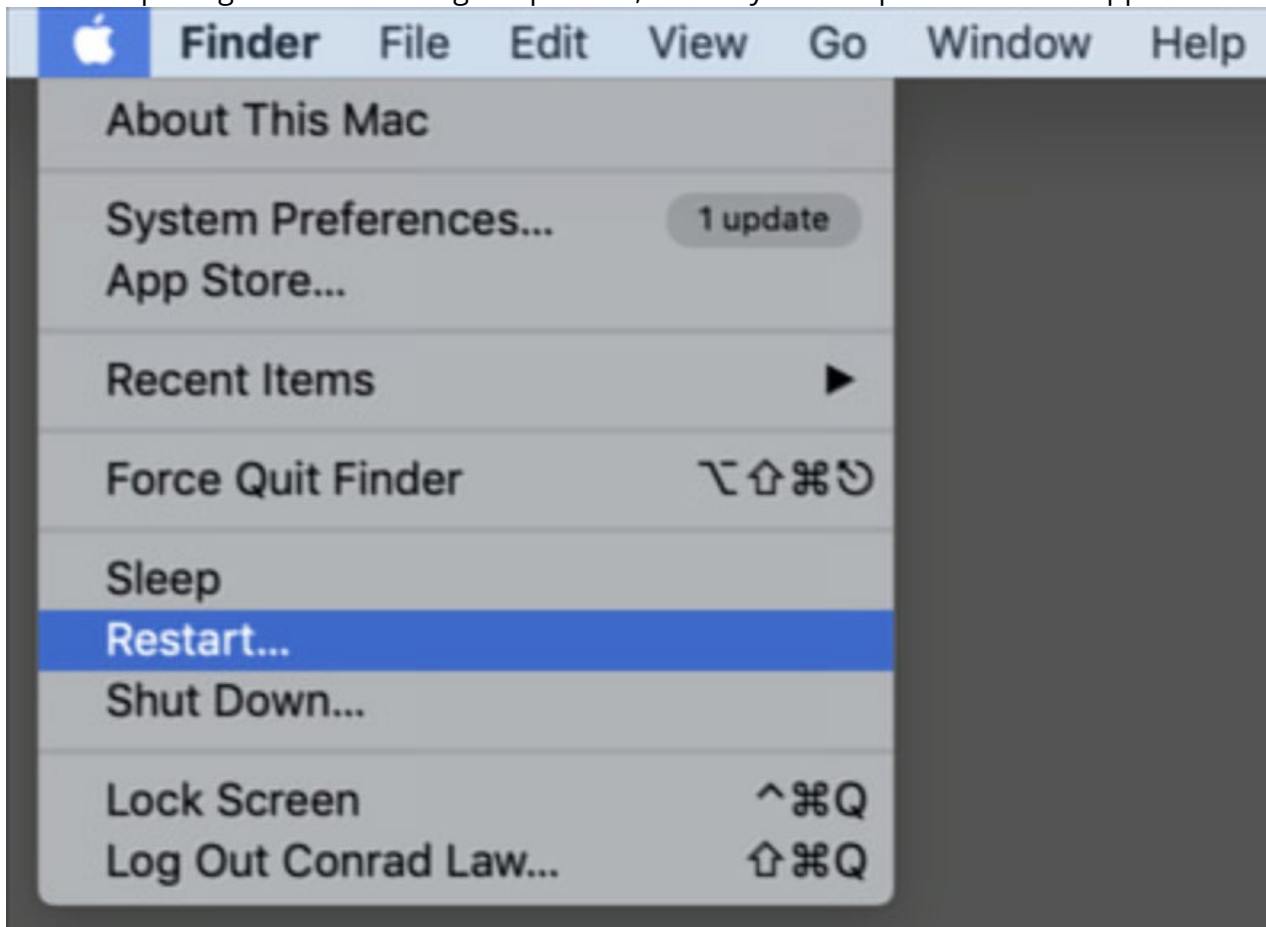


9. Once you are logged in with your WebAccess ID, you will see this screen. If you select "Yes" and check, "Don't show this again," you will not see this screen again.





10. After completing the Microsoft sign-in process, restart your computer from the Apple menu.



11. After the restart, your migration is complete! You can now use the Intelligent Hub's full application and resource library.